

 RELIABILITY

 LOW OPERATING COSTS

 VERSATILE

 HIGH PRODUCTION CAPACITIES

 NO ENVIRONMENTAL IMPACT

FOR REC[®]
RECYCLING SYSTEMS

— CUSTOM

WEEE

TREATMENT PLANT

TURNKEY



SMART SOLUTIONS TO PRESERVE THE ENVIRONMENT

TAILOR-MADE SOLUTIONS

The FOR REC WEEE treatment plant provides a production cycle able to process any type of discarded electrical and electronic equipment, both small appliances and large white goods (excluding refrigerators, which have a specific and separate treatment). The treatment process limits the use of labor and uses automation to maximize the value of all components, reduces waste, and guarantees "zero" environmental impact.



SORTING

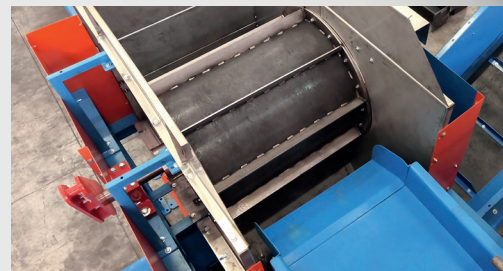
The manual sorting stage allows the recovery of valuable materials such as electronic boards and cables as well as to remove hazardous and unsuitable material such as batteries and foreign bodies. Sorting is subsequent to treatment with the multi-crusher and is customizable by number of stations and structure.



Z15

HAMMERS MILL

FOR REC hammers mills, are characterized by their sturdy construction and extreme speed of access to wear parts thanks to a hydraulic opening and lifting system of the upper armor. Forrec hammers mills are compact machines able to process ferrous and nonferrous metals, electric motors, aluminum scrap, copper, and WEEE.



DETECTION AND SEPARATION SYSTEM

The system is used to separate magnetic metals from other materials. It works through the use of powerful magnets and vibrating conveyors that allow the material to advance evenly and be attracted to the magnet while the rest of the material continues on its flow path.



EDDY CURRENT SEPARATION SYSTEM

The eddy current separation system allows non-magnetic metals to be recovered from the flux. It consists of three main parts:

1. **Vibrating conveyor:** advances the material evenly to the next stages.
2. **Magnetic drum:** separates magnetic metals by a powerful magnet, which holds and removes them from the flux.
3. **Foucault current system:** uses a rotating magnetic field to repel nonmagnetic metals, separating them from nonmetallic materials.



LC

MULTI-CRUSHER

Multi-crushers are twin-shaft machines with special blades that are ideal in treatments where product preparation is required to allow subsequent manual sorting or automatic sorting. Working without a screen, they can handle high material flows. LC Multi-crushers are mainly used in the processing of WEEE (Waste and Electrical and Electronic Equipment) to enable the opening of the appliance which is sent to the following sorting.

EXAMPLES OF OUTPUT



non-ferrous



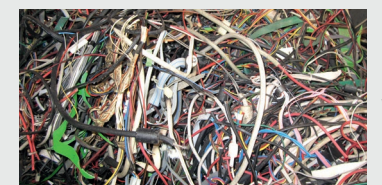
iron



plastic



electronic boards



wires

All systems made by FOR REC are modular and implementable according to specific customer needs.



SCAN ME!
DISCOVER OUR PRODUCTS

